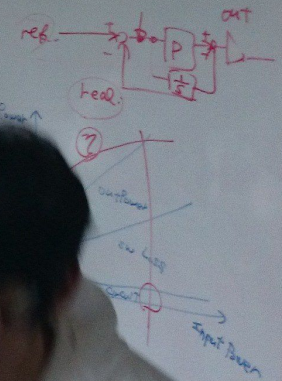


High efficiency Award

Group	Switching frequency	Efficiency	Output power
Group 1	150 kHz	51.2%	
Group 2	12.5 kHz	46%	
Group 3		57.23%	
Group 4		8.7%	
Group 5		5%	
Group 6		0.1%	



2.4. Control circuit

PI Controller



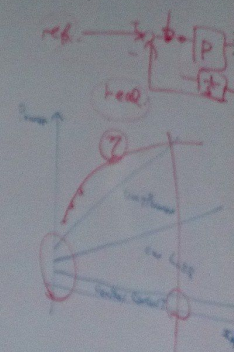






High efficiency Award

Group	Matching frequency	Efficiency	Output current
Group 1	100 kHz	51.2%	0.35A
Group 2	100 kHz	46%	0.35A
Group 3	100 kHz	57.23%	0.35A
Group 4	100 kHz	56.7%	0.4A
Group 5	100 kHz	0.37A	0.35





Efficiency of DC-DC convert

Group1





Features of Japanese companies.

✓ Pros & Cons

Pros.	Cons.
Long term employment. (education)	It may take a time to be promoted.
Stable working environment.	Not increase your salary dramatically.
Team oriented.	Need to support to your colleagues.

High efficiency Award

Group	Switching Frequency	Efficiency	Output current
Group 1	150 kHz	91.2%	0.35A
Group 2	92.3 kHz	86%	0.35A
Group 3	544 kHz	97.23%	0.35A
Group 4	144 kHz	94.7%	0.4A
Group 5	83.48 kHz	89%	0.37A
Group 6	141.5 kHz	93%	0.35

