

# TELECOM PARISTECH



**NUMBER 1 FRENCH ENGINEERING SCHOOL IN ICT**

Founded in 1878

# Why choose France ?



## ■ Excellence of the Higher Education system

- 20% of the national budget devoted to education
- 3<sup>rd</sup> destination in the World for international students

## ■ French language

- Official language of more than 200 million people (5th in the world )
- 3<sup>rd</sup> most important language for business in the world after English and Mandarin Chinese (Source: Bloomberg)

## ■ 6<sup>th</sup> economic power power in the world

“What international students are saying”

- 9 out of 10 international students recommend France as first study destination
- 94 % believe that studying in France has been a self-enrichment
- 86 % believe that studying in France have highlighted their university curriculum

# Why choose Paris?



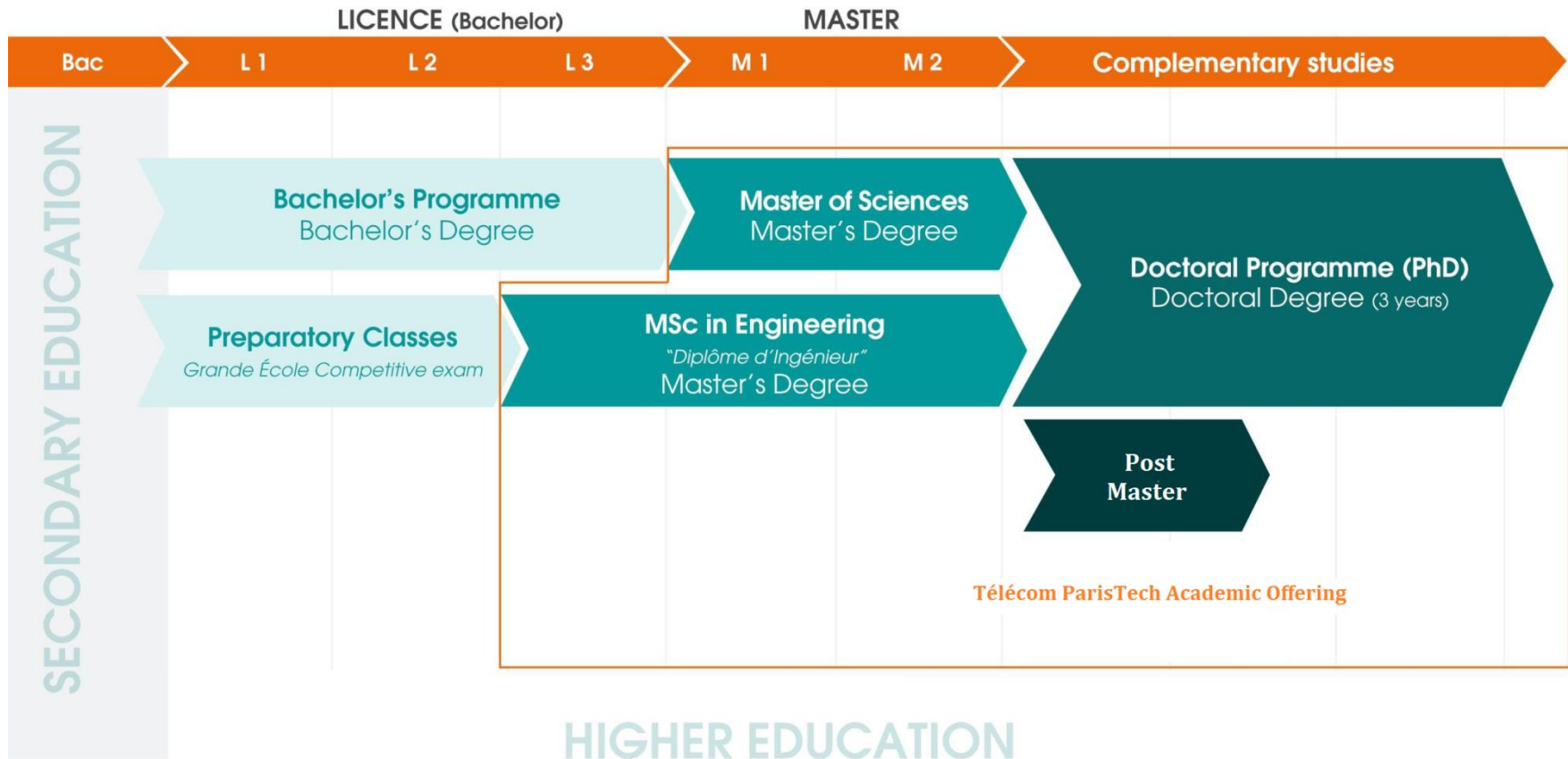
Source: PREDIA

- **816 000 companies**
  - 1/3 of the foreign companies in France
  - 1st European center for Fortune 500
  - 1st European center for professional meetings
  - 30% of France's Gross Domestic Product (GDP)
- **Paris named World's Best Student City (QS)**
  - 17 Universities, 40 Graduate Schools of Engineering
  - > 70 000 foreign students (20% of the students of the area)
- **40% of national investment in R&D (1st European region)**
  - 95 500 researchers (1st European region)

# STUDYING AT Télécom ParisTech



# Higher education system in France





# The « grandes écoles » model

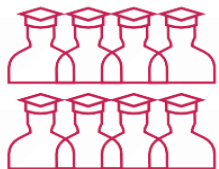
## ■ A unique model

- Highly selected candidates
  - Acceptance rate of Preparatory Classes = Top 5%
  - Acceptance rate of Telecom ParisTech = Top 0,5%
- Excellent level in Mathematics, Physics and Computer Science
- Multidisciplinary studies and development of professional skills
- Open up to Economics, Management and Communication
- A teaching faculty bringing together professors and experts from companies
- A limited number of admitted students enabling a personalized curriculum (small groups, Student-Faculty ratio 5:1)
- High-quality and innovative teaching methods
- International study and exchange

## ■ Strong links with companies

- Compulsory internships throughout the curriculum
- Multiple interactions between Schools laboratories and companies R&D centers
- Active alumni networks

# Key figures



## ACADEMIC

780 engineering students

270 PhD students

16 600 alumni

2 main campus:  
-Paris  
-Sophia Antipolis

1/7 faculty ratio  
(professor/students)



## INTERNATIONAL

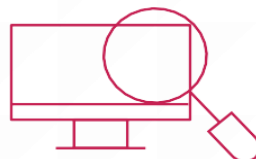
139 Partners in  
41 countries

46 double-degrees

International students:  
78% in Sophia Antipolis  
& 48% in Paris

40 different  
nationalities

26% of graduates have  
their 1st job abroad



## RESEARCH

161 researchers

20 patents per year

18 business chairs &  
joint laboratories

600 international  
publications / year

50% of research  
funded by companies



## ENTREPRENEURSHIP & INNOVATION

Number 1 French  
incubator for creating  
digital companies

Number 1 French  
engineering school for  
the creation of start-  
ups

1 FabLab

1 design studio



## STUDENT LIFE

More than 500 beds

1 school restaurant  
2 cafeterias

50 clubs & associations

7/7 open library

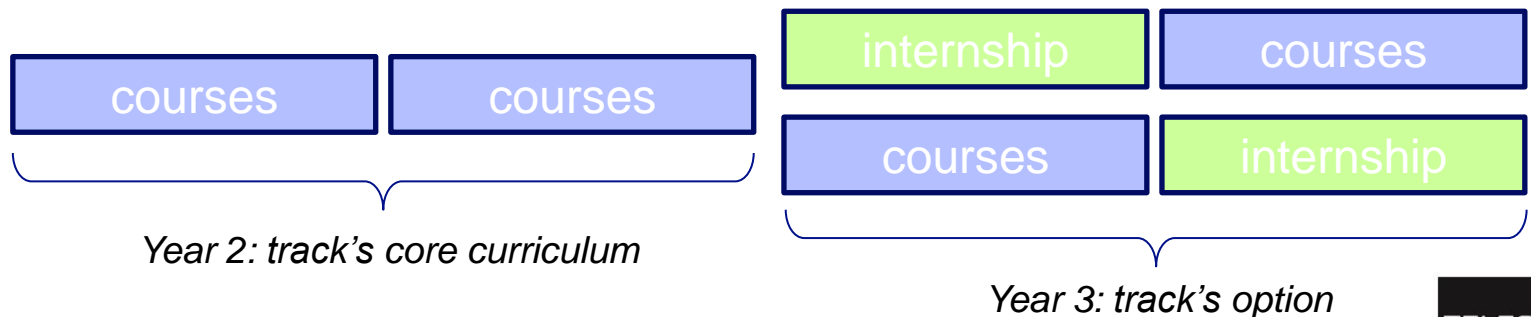
# Years 2 & 3

## ■ 3 semesters of courses

- >120 scientific teaching units gathered into 14 learning tracks
- A track is a 2-semester part-time plus a 1-semester full-time set of courses.
  - The validation of one track is required.
  - The internship is associated with the track to be validated.
- more than 100 non-scientific courses
  - Languages
  - Social sciences
  - Culture

## ■ 1 semester of internship (professional thesis)



- Most often in a company
- Sometimes in an academic research lab.





# Study tracks

## ■ Time Slot A:

- [Image \(IMA\)](#)
- [Stochastic processes and scientific computing \(MACS\)](#) 
- [Distributed Software Systems \(SLR\)](#)
- [Communication devices and systems \(SOCOM\)](#) (50% of courses in )
- [Infrastructures and Networks Security \(SR2I\)](#)

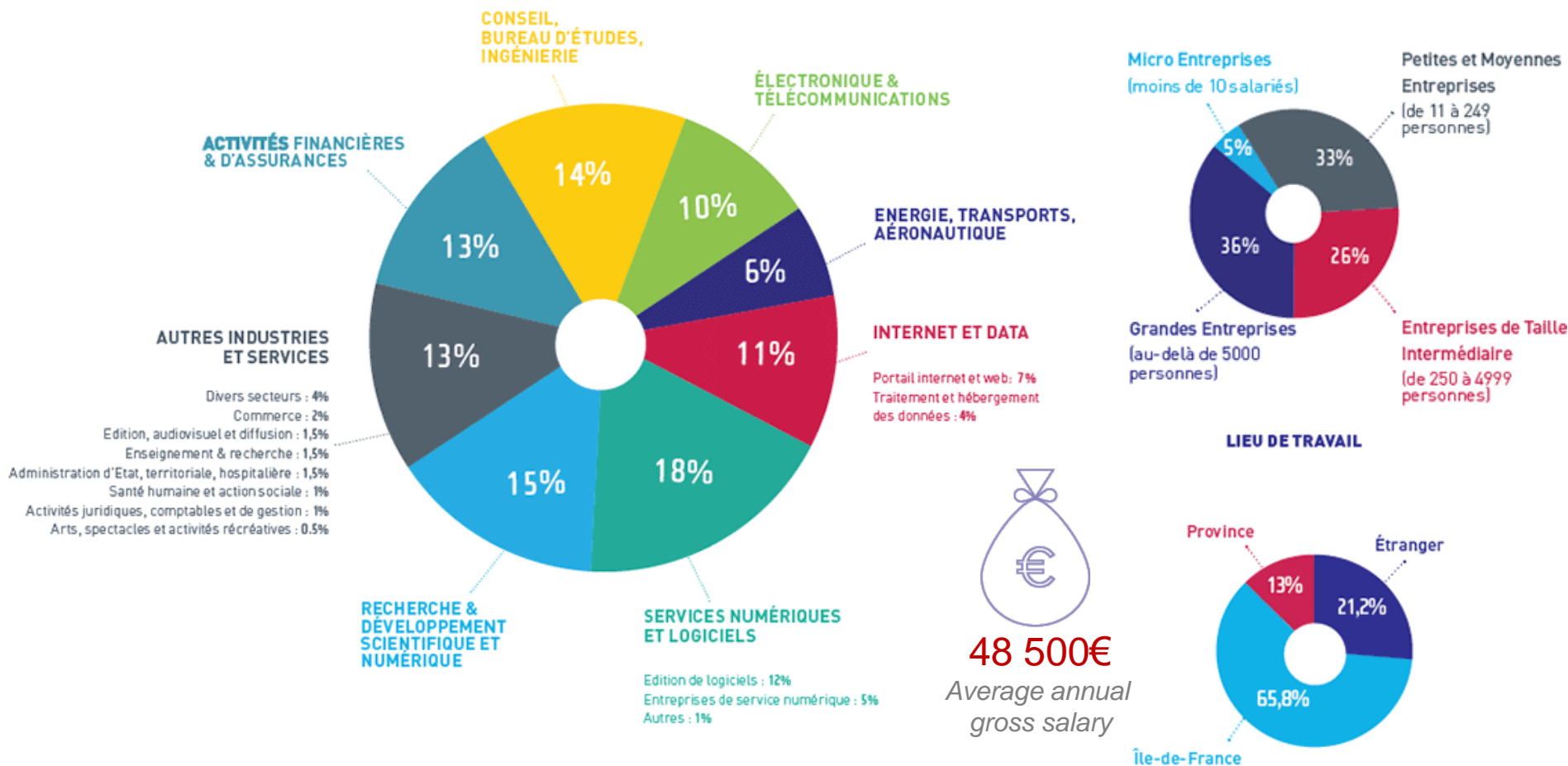
## ■ Time Slot B:

- [3D & Interactive Systems \(IGR\)](#)
- [Mathematics, Theoretical Computer Science and Operation Research \(MITRO\)](#)
- [Networking \(RES\)](#)
- [Strategies, Innovation, Markets \(SIM\)](#) 

## ■ Time Slot C:

- [Algebra, Codes, Crypto, Quantum \(ACCQ\)](#) 
- [Data Science \(SD\)](#) 
- [Embedded Systems \(SE\)](#) - (30% of courses in )
- [Signal Processing for Artificial Intelligence \(TSIA\)](#) 
- [Wireless networks and IoT \(RIO\)](#)

# Telecom ParisTech engineer's first job (survey 2017)



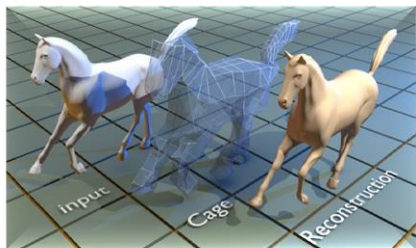
95% of graduates have signed their contract within 4 months.

# RESEARCH & INNOVATION



# RESEARCH AT THE HEART OF OUR STRATEGY

- A multidisciplinary approach in science and technology
- International Research teams
- Strong interactions with socio-economic world
- Permanent connections with public research organizations: CNRS, INRA, INRIA, INSERM, CEA, ONERA...



# AWARDED PROFESSORS



**YANLEI DIAO**

Winner of a ERC Consolidator Grant for her work on the processing of massive data flows and his new Big Fast Data project.



**MICHÈLE WIGGER**

Winner of a ERC Starting Grant for her work, world-renowned in Information Theory.



**TAMY BOUBEKEUR**

Winner of 10 Best Paper Awards.



**THOMAS BONALD**

Winner of a Blondel medal of the Society of Electricity, Electronics and of ICTs.

# Doctoral programme

## ■ 3 years

- cross-disciplinary scientific courses, professional training...

## ■ 4 specializations

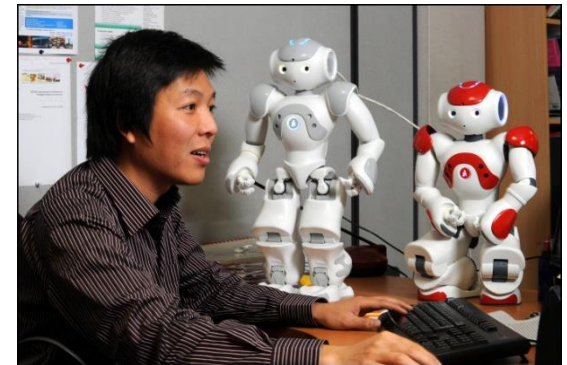
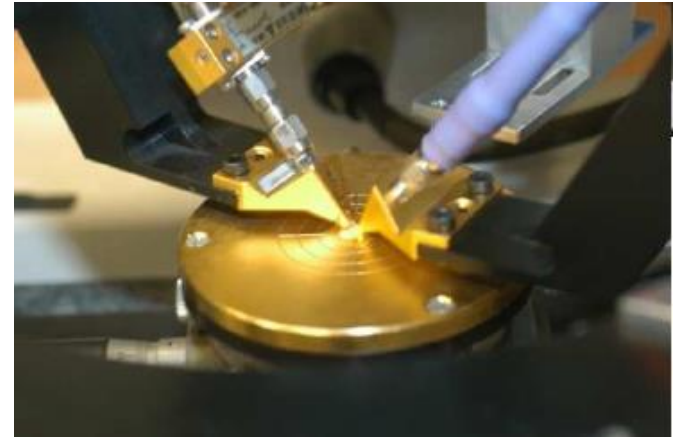
- Electronics and Communications
- Computing and Networks
- Signal and Image Processing
- Information System Economics

## ■ 70 theses awarded each year

## ■ Strong links with industry

## ■ Doctorate School :

- Information and Communication Science & Technology
- Humanities
- Mathematics

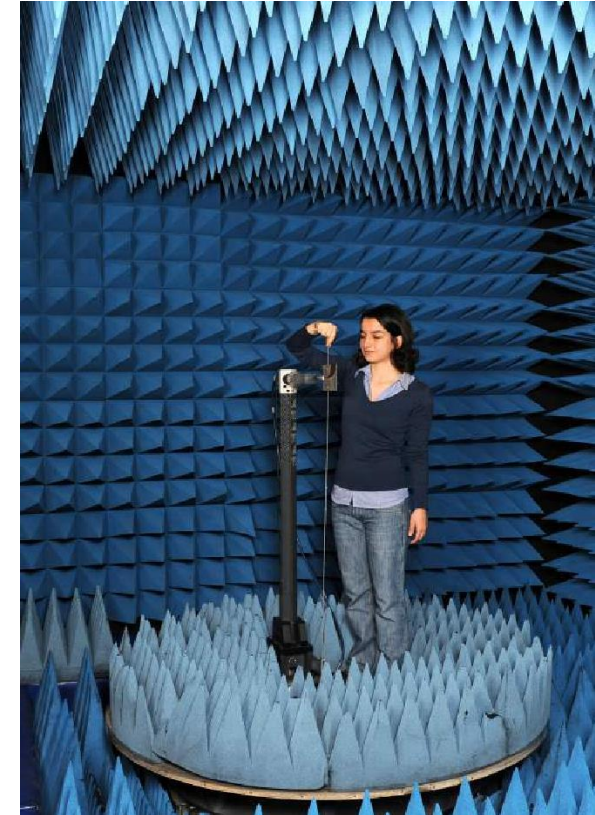
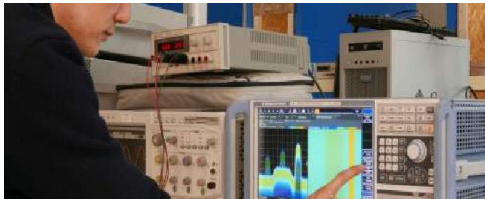
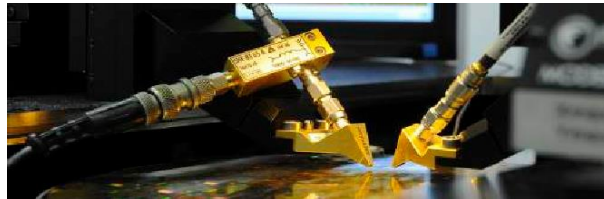




# STATE-OF-THE-ART EQUIPMENTS

Télécom Paristech invests in state-of-the-art equipments for excellence in scientific research and innovation.

- Anechoic chamber Spectrum analyzer Studio design FabLab
- Entangled photon pair sources for quantum communications
- Quantum key distribution system
- Characterization platform for new semiconductor laser solutions



# Our strong partnerships with industry

## ■ Governance

- Representatives from industry in boards, working groups, etc.

## ■ Teaching

- > 500 part-time lecturers from companies
- Internships and study projects in companies

## ■ Research

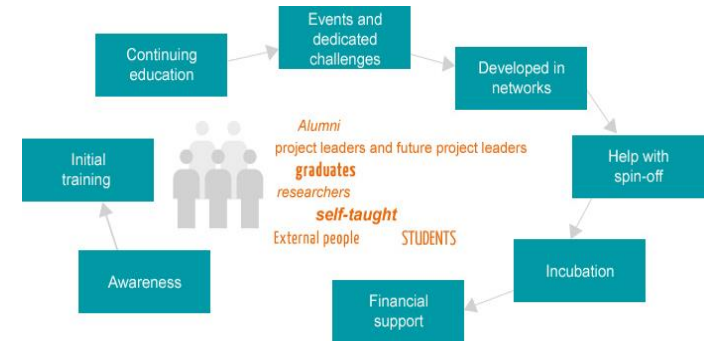
- 18 Teaching and research chairs or Joint Lab
- Member of Competitive Clusters
- Joint projects

## ■ Entrepreneurship



## ParisTech Incubator

- Created in 1999 by Télécom ParisTech
- Puts together 10 ParisTech schools' expertise
- Related domains: digital, data processing, artificial intelligence, cybersecurity...
- 35 entrepreneurs supported each year
- 400 projects supported since the creation of ParisTech Entrepreneurs
- 86% of start-ups still exist 5 years after their creation
- 2800 jobs created
- Successful stories: Netvibes (2005) / Hellocoton (2008)



# THE STRENGTH OF A NETWORK



## Some famous alumni



- Patrick Drahi, president of Altice (Numericable, SFR, HOT...)
- Jean Bernard Lévy, chairman and CEO of Electricité de France (EDF)
- Michel Combes, CEO of Alcatel Lucent
- Eric Labaye, director of Mc Kinsey Europe
- Jean Beunardeau, director of HSBC Europe



### *In the past:*

- Alain Glavieux, co-inventor of turbo-codes
- Maurice Lauré, creator of the Value Added Tax





## Some famous alumni



- **Abdeslam Ahizoune, Minister of Telecommunications (1992-1995 & 1997-1998), Chairman of Maroc Telecom**



- **Mongi Marzoug, Minister of ICT (2011-2014), Tunisia**

- **Yang-hee Choi, Minister of Science, ICT, and Future Planning, South Korea**

- **Bedoumra Kordjé, Minister of Finances of Tchad**





# Some alumni success in ICT innovation



Google TV



netatmo

netvibes  
Dashboard Everything

streamezzo  
rich media technologies



- They succeeded in the US:
  - **Jean-Luc Vaillant & Yan Pujante (co-founders of LinkedIn)**
  - **Vincent Dureau & Barbara Coppola (in charge of Google TV)**
  - **Henri Moissinac (former head of Facebook Mobile)**
  - **Luc Julia (owner of Apple SIRI patents)**
  - **Fred Potter (Founder of NetAtmo, awarded at CES Las Vegas)**
- They Succeeded in France :
  - **Tariq Krim (creator of Netvibes, sold 50 M€ to Dassault Systemes)**
  - **JC Dufourd (cofounder of Streamezzo, sold to Vodafone for its portal Vodafone Live)**
  - **Diaa Elyaacoubi (founder of Streamcore)**
  - **Corentin Raux (founder of « Pretty Simple » and creator of the game « Criminal Case » on Facebook, n°1 worldwide for games on FB in 2013)**

# INTERNATIONAL



# INTERNATIONAL STUDENTS SERVICES

- **Accommodations on campus**
  - Affordable rents: From 300 to 450€ /month
  - Possibility of accommodation allowance
- **Average living costs in Paris: ~ 800 € /month**
  - Public transportation card : 35€ /month
  - Health care : 90€ /year
  - A meal at school cafeteria : ~3€
- **Assistance with visa and residence permit procedures**
- **Tuition fees for partner universities : 2650€ /year (1<sup>st</sup> year is waived)**
- **Intensive Language Training Programs**
- **Mentoring by senior students & Alumni**
- **Active participation in student activities**
- **Wifi everywhere**

# SCHOLARSHIPS

Telecom ParisTech supports French and international student mobility through :

- **The French government's Eiffel Scholarship**
  - ~1200€/month (24 months) + Flights + Health care
  - Only candidates in the top 3% are allowed to apply
  - International Office is in charge of your application
  
- **Scholarships provided by the foundation of Telecom**
  - ~10 000€ for 2 years
  - You must contact International Office
  
- **Scholarships provided by Alumni Association**
  - Variable amount
  - You must contact International Office

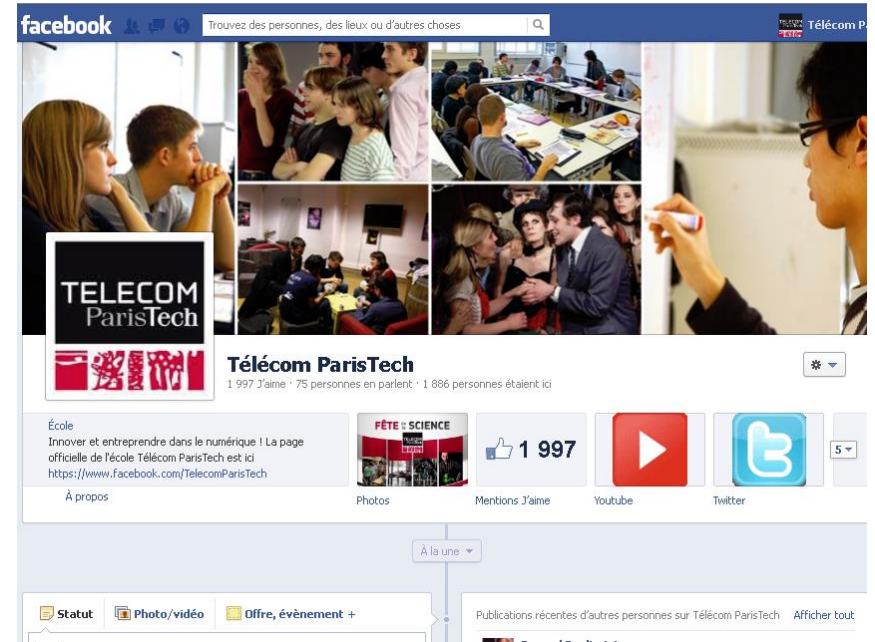
# More information ?

## web sites

- [www.telecom-paristech.fr/](http://www.telecom-paristech.fr/)
- [international.telecom-paristech.fr/](http://international.telecom-paristech.fr/)
- FACEBOOK, twitter, youtube

## Contact us

[international@telecom-paristech.fr](mailto:international@telecom-paristech.fr)



### LÉCOM PARISTECH : NŒUD D'EXCELLENCE

Lécom ParisTech forme les ingénieurs des technologies de l'information et de la communication (conseil, recherche & développement, management...).

Ensemble de l'Institut Télécom, elle est devenue un acteur européen de référence dans les domaines de l'enseignement supérieur, de la recherche et de l'innovation en STIC. Lécom ParisTech est membre

### FORMATION CONTINUE



Le catalogue 2012 est paru, plus de cent stages courts éligibles au DIF dans tous les domaines des TIC :

- Manager dans un environnement high-tech

### QUELS EMPLOIS, QUELS MÉTIERS ?



Les diplômés de Télécom ParisTech sont embauchés dans des secteurs d'activité de plus en plus variés comme le montre l'enquête de 2011.



# MAKE I.T @ TELECOM PARISTECH

